

Human CCR8-N1-35 Protein; hFc Tag

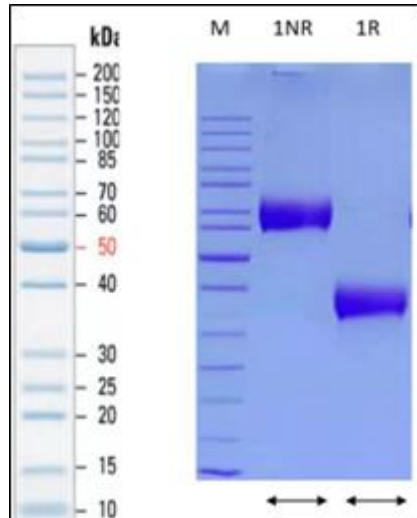
Product Information

Product Name	Human CCR8-N1-35 Protein; hFc Tag
Storage temp.	Store at $\leq -70^{\circ}\text{C}$, stable for 6 months after receipt. Recommend to aliquot the protein into smaller quantities for optimal storage. Please minimize freeze-thaw cycles.
Catalog# / Size	GM-54040RP-100 / 100 μg GM-54040RP-1000 / 1 mg

Protein Information

Alternative Names	CY6; TER1; CCR-8; CKRL1 ; CDw1 98; CMKBR8; GPRCY6; CMKBRL2; CC-CKR-8
Source	Human CCR8-N1-35 Protein; hFc Tag (GM-54040RP) is expressed from human 293 cells (HEK-293). It contains AA Met 1 - Lys 35 (Accession # P51685-1). This protein carries a hFc tag at the C-terminus.
Purity	> 95% as determined by SDS-PAGE
Endotoxin	< 1 EU/ μg , determined by LAL gel clotting assay
Predicted Mol Mass	29.5 KDa
Formulation	Supplied as a 0.2 μm filtered solution of PBS, pH7.4.
Description	The CCR8 protein is a protein encoded by the CCR8 gene and belongs to the G protein-coupled receptor (GPCR) family. The CCR8 protein plays an important role in regulating immune responses. It is mainly expressed on the surface of immune cells and is involved in regulating the chemical signaling between cells, thereby affecting the modulation of inflammation and immune responses. The CCR8 protein plays a key role in regulating the activity of T cells, macrophages, and other immune cells, and is crucial for maintaining the balance and function of the immune system.

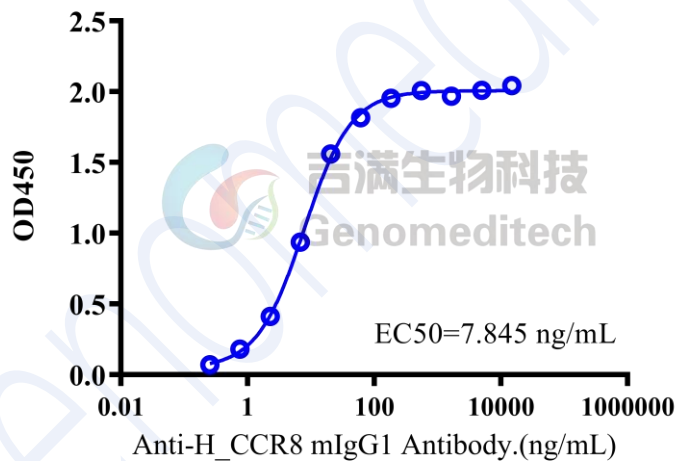
SDS-PAGE



On SDS-PAGE under non-reducing (1NR) condition and reducing (1R) condition. The gel was stained overnight with Coomassie Blue. The purity of the protein is greater than 95%.

Bioactivity-ELISA

Human CCR8-N1-35 Protein; hFc Tag, ELISA 0.1 μg Human CCR8-N1-35 Protein; hFc Tag of per well



Human CCR8-N1-35 Protein; hFc Tag (Catalog # GM-54040RP) was immobilized at 1 $\mu\text{g}/\text{ml}$ (100 $\mu\text{L}/\text{well}$). Increasing concentrations of Anti-H_CCR8 mIgG1 Antibody (Catalog # GM-49487AB) were added.